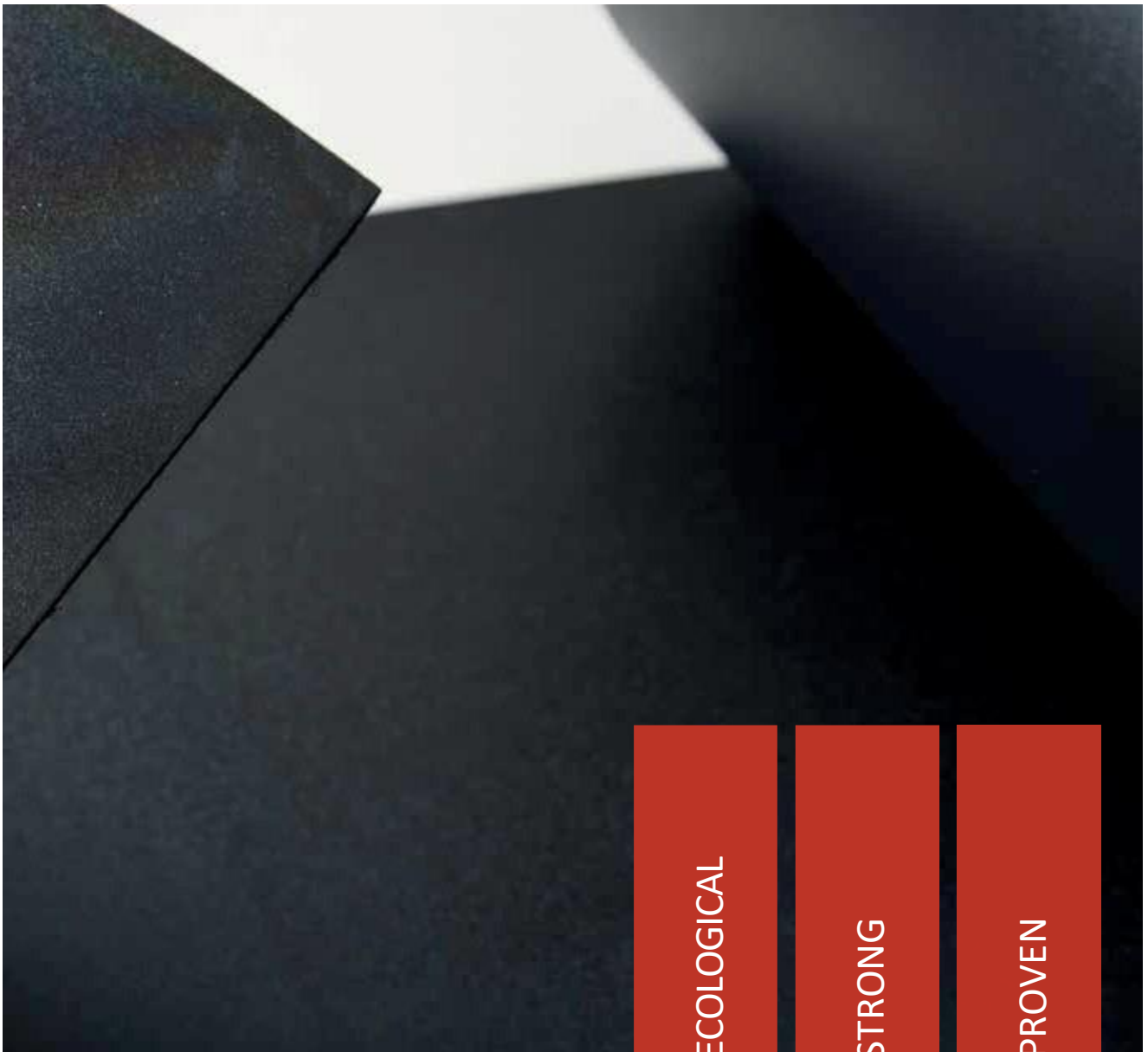


O.C.-PLAN®

THE SEALING MEMBRANE MADE OF ECB



ECOLOGICAL

STRONG

PROVEN


POLYFIN AG
Flachdachtechnologie der Zukunft

O.C.-PLAN® – THE SEALING MEMBRANE MADE OF ECB

O.C.-Plan® waterproofing membranes are high-quality ECB (ethylene copolymer bitumen) membranes for single-layer waterproofing. They are also suitable from an ecological perspective for environmentally friendly and outstandingly practical and craftsman-orientated processing.

For more than 40 years, O.C.-Plan® waterproofing membranes made of ECB have been used successfully all over the world.

Due to its bitumen compatibility, O.C.-Plan® is ideally suited for both new builds and refurbishments.

O.C.-Plan® is suitable for all flat roof construction methods and installation types as well as for waterproofing in various areas of structural waterproofing.

Ecology and sustainability play an important role in modernisation and new construction projects, especially today. For this reason, ecological building materials are becoming increasingly important. As a PVC-free, halogen-free and plasticiser-free building product, O.C.-Plan makes a valuable contribution to sustainable construction.

AS INDIVIDUAL AS YOUR REQUIREMENTS - PRODUCT ADVANTAGES OF O.C.-PLAN® THAT TAKE YOU FURTHER

ecological

O.C.-Plan is manufactured ecologically, i.e. environmentally harmful components such as plasticisers, PVC and halogens such as chlorine and bromine are not used in production. No toxic or hazardous substances are released during the seam joining process either. No solvents are required to pre-treat the weld seams. With O.C.-Plan® you are using a product that is root and rhizome resistant according to the EN 13948 and the FLL method.

strong

Thanks to the high product quality, O.C.-Plan® is highly resistant to environmental influences. It has a long life expectancy and a high load-bearing capacity. O.C.-Plan® is also highly resistant to extreme temperature fluctuations and weather conditions such as hailstorms

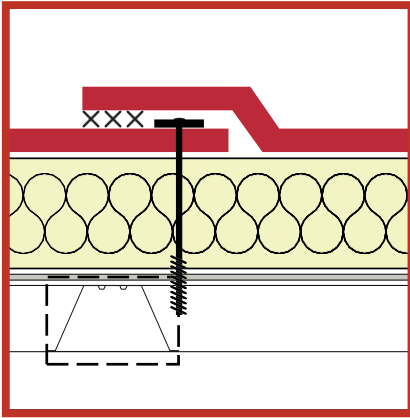
proven

The reliability of O.C.-Plan® has been proven by its many years of use for over 40 years. The installation of millions of square metres also speaks for the long product life and safety of O.C.-Plan®. Continuous quality assurance in accordance with ISO 9001:2015 (TÜV certification) and CE certification in accordance with DIN EN 13956 and DIN EN 13967 also ensure the reliability of O.C.-Plan®.

COMPATIBLE WITH BITUMEN AND POLYSTYRENE - ROOT-RESISTANT TO EN 13948 - TESTED FIRE PROTECTION - EASY INSTALLATION AND PROCESSING - SAFE SEAM JOINING TECHNIQUE THANKS TO LARGE WELDING TEMPERATURE WINDOW

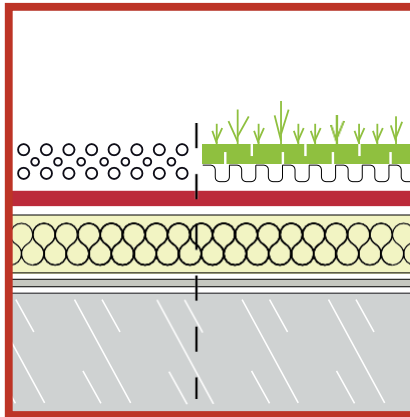
LASSEN SIE SICH VON DEN ZAHLREICHEN ANWENDUNGSMÖGLICHKEITEN VON O.C.-
PLAN® ÜBERZEUGEN

ECONOMICAL SOLUTIONS FOR EVERY ROOF STRUCTURE



MECHANICALLY FASTENED

O.C.-Plan® 3020



LOSE LAID WITH BALLAST

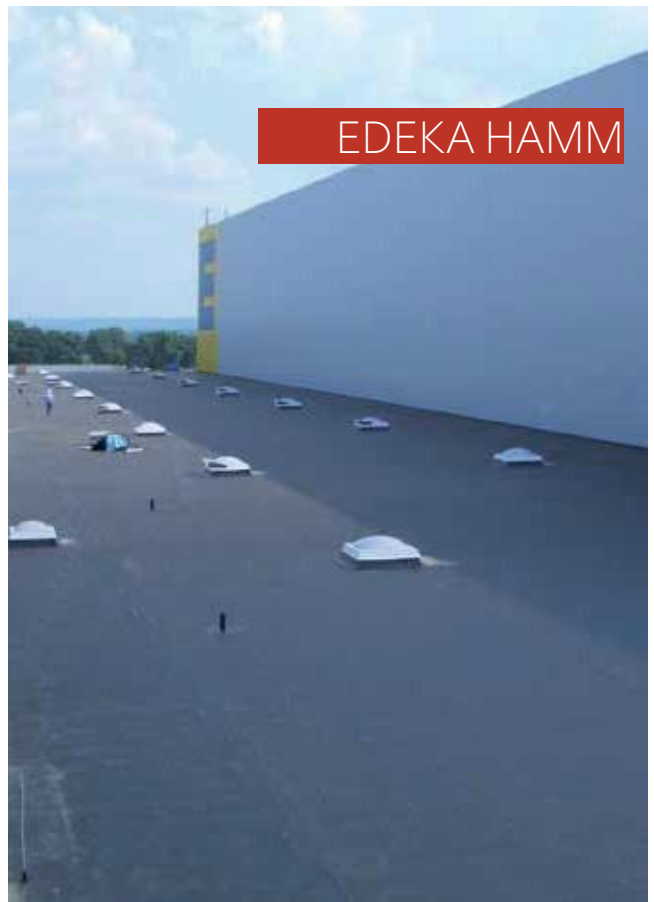
O.C.-Plan® 3020



Technical data	O.C.-Plan® 3020, black, with glass fleece reinforcement
Lose laid with ballast including roof garden system build ups	●
Mechnically fastened	●
Partially bonded	—
Fully bonded	—
Effective thickness in mm	2,0
Width in mm	2100* / 1500 / 1050 / 750 / 500 / 250
Length in m per roll	20

**special width on request*







POLYFIN AG
Polyfinstraße 1
D-74909 Meckesheim
Phone: +49 (0) 62 26 / 99 39 4 – 0
Fax: +49 (0) 62 26 / 99 39 4 – 99
www.polyfin.de
info@polyfin.de



Institut Bauen
und Umwelt e.V.

